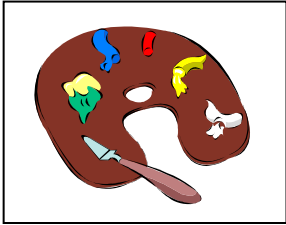


IMAGINATION \* CREATIVITY \* INNOVATION  
Towers Elementary School Art Enrichment Classes  
Winter Session

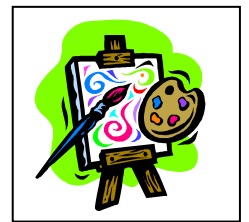


# PICASSO and Me!

## NEW Master Artists!

Drawing Station \* Play dough Station  
3-D Manipulatives!

**Mondays**  
**January 9<sup>th</sup> – March 26<sup>th</sup>**



**9 - Week Session: \$95**

NEW Lessons rotate quarterly

*\*Limited Scholarships available to those in need*

*Classes will not be held: January 16<sup>th</sup>, February 13<sup>th</sup>, and February 20<sup>th</sup> due to school holidays  
Week of Parent/Teacher Conferences, students meet directly at the lunch tables.*

**2:00-3:00 pm – Kindergarten**

**3:15-4:15 pm – 1<sup>st</sup>-5<sup>th</sup> Grades**

Directly after school ends, classes meet at the outside lunch tables.

Pick up also takes place at the outside lunch tables.

Kindergarteners can bring a snack and wait (supervised) until 3:15 for the upper grade pick-up if needed  
Parents for the 3:00 pick-ups must sign in at the front office first.

**MAKE CHECKS PAYABLE TO:**

Art To Grow On Children's Art Center, Inc \* (310) 625-6028 [www.art2growon.com](http://www.art2growon.com)



-----  
**PICASSO and Me! Towers Registration Form January – March 2012**

Please check: \_\_\_\_\_ 2:00 – 3:00 Kindergarten  
\_\_\_\_\_ 3:15-4:15 \_\_\_\_\_ 1<sup>st</sup> \_\_\_\_\_ 2<sup>nd</sup> \_\_\_\_\_ 3<sup>rd</sup> \_\_\_\_\_ 4<sup>th</sup> \_\_\_\_\_ 5<sup>th</sup> grades

Name of child \_\_\_\_\_ Age \_\_\_\_\_ Grade \_\_\_\_\_ Room # \_\_\_\_\_  
Name of Parent \_\_\_\_\_ Phone Number \_\_\_\_\_  
Email Address \_\_\_\_\_

\*\*Please let us know if your child walks home alone, goes to the YMCA, is staying for snack or has special instructions after school: \_\_\_\_\_

\* Please return to the School Office by Friday, January 6<sup>th</sup>, 2012

Art To Grow On Children's Art Center, Inc. (310) 625-6028 [www.art2growon.com](http://www.art2growon.com)

